

ACCESS

MAGAZINE



New hybrid technology

Komatsu looks to the future

CONFERENCE EXCEEDS EXPECTATIONS
TAKING IT TO THE MAX (FITZGERALD)



MAY 2022

MAJOR CORPORATE SPONSOR

KOMATSU

PLATINUM SPONSORS



ACCESS MAGAZINE

is published by Municipal Works Australia and distributed nationally via our state affiliate associations to approximately 1200 members.

PO Box 1254
Geelong, Victoria 3220
PH: 0408 129 394

Email: admin@municipalworks.com.au
Website: www.municipalworks.com.au
Membership Contacts:
Please contact your State Representative via the contact details listed on the Governance section of the MWA website.

All advertising enquiries
to admin@municipalworks.com.au

GOLD

Delnorth Roadside Products
DeNeeffe Signs
EarthCo
Energy Safe Victoria
Gemm Chemicals & Coating Solutions
Grays.com
Hako Australia
Kennards Hire
M Tucker & Sons
Municipal Association of Victoria
Porter Excavations
Road Maintenance
Road Safety Grating
SVC Products
Terra Firma Industries
Traffic Calming Australia

QUEENSLAND

A1 Evolution
Access Linemarking Equipment
AusSpan
Civil Independence
Colas Contracting
Guardrite Security & Traffic Management
JMP Signage
Link Resources
Precision Laser Services
Proterra Group
Roadhire
SAT Civil Constructions
Sharing Australia Group
Stabilised Pavement of Australia

BRONZE

Ace Contractors Group
Anitech
APS Drainage and Civil
ASG Industrial
Aussie Vac Trucks
Australian Handrails
Bild Group
City Circle Recycling
Civilmart
Danley
Dial Before You Dig
Dy-Mark Australia
Earthlok
Ecodynamics Mulch
eiengineering
Elecbrakes Pty Ltd
Ennis Flint
EnviroGreen Clean Services
ESP Australia
EVM Australia
Form Direct
Game Traffic and Contracting
Graffiti Removal Chemicals
Inside-Out Consulting
Interflow
IPWEA Vic
J&R Eathworks
JCB Construction Equipment Australia
KOR Equipment Sales
KPI Utilities
Latus – Logistics Risk Specialists
LGWA of WA
Mawsons Concrete and Quarries
May Asphalt Group
McMahons
MIEPOL
Milwaukee
Municipal Engineering Foundation Victoria
Onetrak
Position Partners
Prendergast Earthmoving
RAW Recruitment & Services
RDO Equipment
Repurposelt
Roadsafe Asphalt
Rosmech
Safe Footpaths
Saferoads
Samson Hire
ShoulderMaster
Smart Lock
Stabil-lime Group
TDM Pipeline Solutions
Terry Alford Consulting
Total Drain Group
Traffic Diversions Group
Trafficca Road Services Pty Ltd
UMS
Ventia
Veolia Australia and New Zealand
Vinidex
Wireless Communications

FRONT COVER:
Photo courtesy of Komatsu



Contents

- 05** REPORT FROM THE CHAIR
- 07** AROUND AUSTRALIA
- 10** ANNUAL CONFERENCE EXCEEDS EXPECTATIONS
- 15** GRAFFITI REMOVAL TRAINING
- 16** KOMATSU READY FOR TOMORROW
- 21** INTERIM GUIDLINES ISSUED ON RECYCLED PLASTICS
- 23** OMNIGRIP OPENS FIRST QUEENSLAND DEPOT
- 25** QUEENSLAND EVENT
- 26** MAX LEAVES AN INDUSTRY LEGACY
- 28** TAMS TRAVEL AWARDS

ACCESS OVER 1.4 MILLION PARTS ONLINE WITH EASE ON PARTS.CAT.COM (PCC)



On PCC, you have access to the best selection of new, used, aftermarket and remanufactured parts by both Caterpillar® and allied brands.

You can browse by part number, equipment model, serial number, or keyword to find the exact part you need for your machines and equipment.

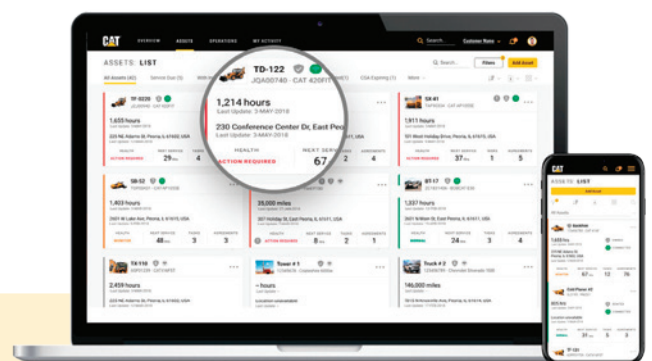
Making the switch to online ordering allows you to shop from any device, giving you the ability to manage parts orders within your planning schedule.

PCC also saves you time, allowing you to:

- Save frequent orders by adding parts to Saved Lists as you shop
- View order history to quickly repeat a past order
- Upload a parts list and order multiple parts using Quick Order
- Set shopping preferences like shipping, payment details and more

▶ Start saving time.
Getting started is easy.

1. Scan the QR code or type parts.cat.com into your web browser.
2. Create an account by filling out the form.
3. Look out for a welcome email from WesTrac with helpful information and the next steps.



Scan the QR code to access parts.cat.com

Visit westrac.com.au or call 1300 88 10 64.

© 2021 WesTrac Pty Ltd and Caterpillar. All Rights Reserved. CAT, CATERPILLAR, LET'S DO THE WORK, their respective logos, "Caterpillar Corporate Yellow", the "Power Edge" and Cat "Modern Hex" trade dress as well as corporate and product identity used herein, are trademarks of Caterpillar and may not be used without permission.





REPORT FROM THE CHAIR

I trust that you had a safe and enjoyable Easter break. I wanted to let you know that the Board and Executive have been hard at work planning what is shaping to be an exciting 2022. We recently got together to review MWA's Strategic Plan 2020-2023 and it was pleasing to note that most of the actions in the plan have now been completed.

We then took the time to develop a new plan including a new set of goals and actions to cover 2023 through to 2026. The plan aims to continue the tremendous momentum we have achieved over the past two years.

You will have a chance to read and comment on the actions we propose when we circulate the plan to our members shortly as part of our stakeholder consultation process.

In other news, we are pleased to announce that we have engaged two new strategic partners to help deliver member and event services. Daniel and his team from MSE Event Group, who helped us out at our recent 28th National Municipal Works and Engineering Conference, will be working with us in the management of our 2022 events program. MSE have a diverse team of event and hospitality professionals that specialise in managing events for industry

associations.

We have also recently engaged the services of communications specialists PIER Marketing. PEIR will be working on a range of projects, including a review of the way we provide and receive information to and from our members. The purpose of the review is to ensure that information to our members is provided in a manner that best suits their needs, and that we are engaging our local government members effectively.

With COVID restrictions gradually easing across the country we will focus our efforts on developing our events program for 2022. These events will be held in accordance with the highest COVID Safe standards possible, including the utilisation of outdoor facilities where practical.

We will let you know what we have planned for 2022 shortly and I look forward to meeting you at one of these events if you can make it.

The MWA Board L to R: Mauro Starc (Board Chair), Brett Quarrier, Peter Donato, Peter Ali (CEO), Brian Weeks, Ray Leak, Darren Findlay (Deputy Chair) and Neil Whiteside (Treasurer). Absent: Steve Van Orsouw and Alan Jones.

You could make the
**longest lasting,
most durable,
anti-graffiti**
signs in the industry.



Learn how:
avydn.co/trafficjet

CONTACT

James Williams

e: james.williams@ap.averydennison.com

p: 0439 993 800



TrafficJet™ Xpert

TrafficJet™ Pro

A white silhouette of the Australian continent is centered on a solid blue background. Below the map, the text 'AROUND AUSTRALIA' is written in large, white, bold, sans-serif capital letters.

AROUND AUSTRALIA



Victoria

Darren Findlay, Melbourne Branch President and MWA Board Member

It was great to see our members turn up in force at the 28th National Municipal Works and Engineering Conference in March. It was our biggest conference yet, with more exhibitors and delegates than ever before.

I would like to send out a special thanks to the conference organising committee who this year comprised Steven White and Brad Byrne from the City of Whitehorse, MWA CEO Peter Ali, former MWA Board Member Shane Hickey and me. I would also like to acknowledge the loyal support provided by our corporate and local government members that went above and beyond with their commitment in supporting the conference during an extremely busy period for everyone given the labour shortages that have been affecting everyone.

We would also like to thank Komatsu Australia, the event's major sponsor, the team from R&S Grating for once again hosting their

brilliant pre-conference charity dinner, the event's supporting partners the City of Bendigo and MAV Procurement, and the conference's supporting sponsors EnergySafe Victoria, Fulton Hogan, Delnorth, BiltGroup, Kor Equipment Solutions and William Adams Cat.

Finally, I would also like to acknowledge the new membership pricing structure mentioned by our Board Chair in the update he provided in the previous article Making General Membership free for people working operational roles in local government. I would like to encourage our existing members to spread the word to their local government colleagues to sign up online via <https://municipalworks.com.au/membership/> so they can start receiving the latest news and professional development and networking opportunities for municipal works staff.



Queensland

Brian Weeks, State President WOAQ and MWA Board Member

We send out our greetings to members of the municipal works industry throughout Australia from sunny but wet Queensland.

While the rain didn't stop our annual golf day and dinner, which went ahead as planned in February, it did put a dampener on things! With the Royal Pines Resort Golf Course underwater due to the torrential rain that flooded northern NSW and southern Queensland we had to engage in some lateral thinking to work out a way to proceed. Step in Mark McKnight and his team from Link Resources. After a few phone calls Mark managed to get a booking at the indoor Top Golf facility on the Gold Coast, allowing the annual "tournament" to go ahead

as scheduled albeit under different playing conditions. Congratulations to the winning team MWA Board Chair Mauro Starc, Damon Baker of AI Evolution, and MWA CEO Peter Ali.

We would also like to thank those who braved the weather to attend our annual dinner which was held on Saturday 26 February. The event, which was sponsored by MWA's major corporate partner Komatsu Australia, was a great success. Thanks also to Gavin Gotke from Scenic Rim and the others on the committee for all their efforts in the planning and staging of the event.

Planning is now underway for an even better event later this year.



Tasmania

Peter Donato, Tasmania Branch President and MWA Board Member

Tasmania generally remains COVID free, so life over here continues to transition back to what can best be described as a pre-COVID environment. COVID travel restrictions did, however, limit our capacity to run some of our planned networking events. With these restrictions now gone we have pencilled in two networking events for 2022. The first of these is planned for 2 June 2022 in Hobart, and the second is scheduled for 23 August in Launceston, coinciding with the Start of AgFest 2022 which commences on the 24 August. We are excited to get back to some face-to-face events after what has been a frustrating few years.

I am also pleased to report that the Tasmanian delegation attended the recent MWA National Conference held in Bendigo, Victoria in March. The delegation included the 2022 recipients of

the TAMS / IntoWork Conference Travel Award, Jade Jones from Huon Valley Council, Darren Johnson from Kingborough Council and I. Tasmania based local government works staff interested in attending the 2023 conference can apply online via the MWA website Awards page up until 31 January 2023.

With our networking event program now back up and running, it has never been more important to sign up for membership via the MWA website. Membership is complementary and will give access to the Networker newsletter, Access magazine and the ongoing series of webinars on a wide variety of interesting topics and more. So let your colleagues know about it, or put them in touch with me to discuss to benefits, or any other issues or ideas they may have.



Western Australia

Ken Markham, President LGWA WA Inc.

LG Works is a professional body representing WA local government outside works crews and management. Members mostly work with roads, waste, parks and gardens but can be involved in other services.

Membership includes a number of benefits including a significant discount to this year's conference/expo. Being part of a nationally recognised professional organisation lends credibility to our workforce by offering awards and scholarships, provides advocacy and representation on policy development and fosters inter-relations with other likeminded Associations.

Last year we rolled out our new e-learning platform which is proving a valuable resource as it provides tailor-made short courses which can be undertaken in your spare time with no down time from work. Need to attend a

different training course or conference? Then apply for one of our study Awards which will cover your course fees, travelling expenses and accommodation, as well as most costs.

We are currently preparing for our 25th Works and Parks conference and expo which will be held at the magnificent Joondalup Resort, with its award-winning golf course and function venue. Our golf day will be held on 9 August, Tim Gossage will be our dinner speaker, but you will also find him on the golf course during the day. Our conference and exhibition will be held between 10-11 August with some great keynote speakers including Matt Gill from the Beaconsfield mine disaster.

To find out more check out our website www.lgwa.com.au or contact us via email office@lgwa.com.au



LG Works

Who we are and what we can offer your works crew

LG Works is a non-profit, non-political association set up in 1999 to provide member services and a network for Works Supervisors. Well, we've come a long way since then. LG Works is now part of a national body providing professional and personal development for all those who work within the industry.

Our members are from local authorities within the State, with varied backgrounds, ensuring a high standard of care for all our Australian major assets and thus ensuring a healthy future for our transportation and public infrastructure. They oversee and are involved with the construction development and maintenance of roads, drainage, parks and gardens, sporting facilities, machinery, buildings, water management, waste and recycling.



Who can join?

Anyone working within the industry

LG Works offers members:

- An annual Works and Parks Conference and Expo (now in its 24th year)
- Training via LG Works Brain Builder Academy
- Scholarships, Study Awards, Mentoring and Service awards
- Financial support for those seeking legal advice on Industrial Relations issues
- Support network of like-minded individuals.

How do you retain good staff?

You support and invest in them.

 www.lgwa.com.au | office@lgwa.com.au

ANNUAL CONFERENCE EXCEEDS EXPECTATIONS



More than 440 industry members attended MWA's annual conference, which was held on on Dja Dja Wurrung Country in Bendigo on 24-25 March.

MWA CEO Peter Ali said it was a record turnout for both delegates, sponsors and exhibitors.

"It was fantastic to have everyone meet face-to-face again, to hear from a range of keynote speakers and see some of the latest industry developments," Peter said.

This year the theme was 'Embracing change and transformation' – two constants in the lives of all municipal works and organisations.

Although Olympian Peter Bol had to withdraw at the last moment, fellow track and field athlete Tamsyn Lewis gave an inspiring keynote

address about her training, dedication and challenges from when she first represented Australia in 1994 to her many victories including winning the 800 metres in the 2008 World Indoor Championships.

Another popular keynote speaker was former AFL footballer Chris Johnson who now works as a key client account executive for RAW Group in Victoria.

RAW works with many organisations in the civil and traffic management industry and has a unique role in training and recruiting Indigenous employees.

As a Gunditjmara and Wiradjuri man, Chris said he was proud of RAW's achievement of placing more than 90 Indigenous workers in



the industry (including 15% females and 31 apprentices) which had in turn brought nearly \$8m of income into Indigenous households.

Other speakers included:

- Scott Grayson, CEO for the American Public Works Association
- Nathan Burke, former AFL footballer
- Beau Vernon, sporting coach and quadriplegic motivational speaker
- Thomas Ruessman, Customer Engineer for Goodyear Tyres

Delegates heard about innovations in the municipal works field through a range of case studies in innovation and creativity, as well as outdoor exhibitions and demonstrations of plant and equipment.

The main conference dinner, proudly supported by Komatsu, was a special time for delegates to relax and enjoy entertainment provided by comedian Ben Price.

Peter Ali said feedback from conference

attendees has been very positive and planning is already underway for the 2023 annual conference.

“I’d like to thank everyone involved in this year’s event, from the conference committee, delegates, exhibitors and sponsors,” Peter said. “It will be hard to top but we’ve got even greater things in store for 2023.”









chemical & coating solutions

NEW Improved Formula

BioWeed™ Herbicide Ultra

A new generation organic, wholly plant derived, knockdown and pre-emergent herbicide – that works fast.

Bioweed is the culmination of 20 years of research and development to deliver a purer product which will take Organic Weed Control to the next level.

To produce BioWeed™ we have sourced the most Ultra pure active ingredients from sustainably farmed pine trees from around the world. While the formula still has 92% of the same weed and seed destroying pine oil properties we have used for over 20 years, the extra purity has meant that it is now even more economical to use.

From trials, and more importantly customer feedback, this means that BioWeed can be mixed at much lower rates and still have the same efficacy on your targeted weeds.

The product is manufactured from a derivative of pine oil, and has been certified organic, under the following numbers:



National Association for Sustainable Agriculture in Australia (NASAA) – certification number is 8082M

APVMA 62367 (Aust Pest & Veterinary Medicine Assoc)



Biological Farmers of Australia – certification number is A1801

BUY
15 x 10 litres
and get
1 x Gloria 5 litre
spray unit
FREE



Landmark Monsanto payout over possible Roundup cancer link divides Australian farmers

Source ABC website 13-8-18

<http://www.abc.net.au/news/rural/2018-08-13/what-does-the-monsanto-case-mean-for-australian-farmers/10114832>

Dying cancer patient awarded \$395m in Monsanto Roundup case

Source SMH website 11-8-18

<https://www.smh.com.au/world/north-america/dying-cancer-patient-awarded-a395m-in-monsanto-roundup-case-20180811-p4zwww.html>

Jurors give \$289 million to a man they say got cancer from Monsanto's Roundup weedkiller

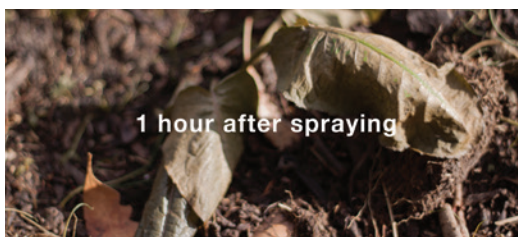
Source CNN website 12-8-18

<https://edition.cnn.com/2018/08/10/health/monsanto-johnson-trial-verdict/index.html>

STOP PRESS!



Before spraying



1 hour after spraying



3 days after spraying

“If we don't have it, we'll source it”

Gary Johnson

0433 890 850

gary.johnson@gemmchemicals.com.au

gemmchemicals.com.au



A Hands-on Approach to Graffiti Removal Training

We couldn't help but be impressed with the new approach implemented by Greg Ireland and his team at Graffiti Removal Chemicals with the opening of their Graffiti Removal Training Centre at Airport West in Melbourne. Greg is running free training courses from April through to November for councils and contractors that want to learn safe and effective ways to remove graffiti from the type of surfaces found in public areas.

This "hands-on" interactive approach to successful graffiti removal training has proved to be extremely popular with some of our member councils. Miles Saunders, City of Melton's Team Leader, Graffiti Management recently attended the facility. He said that he is now "extremely confident with the knowledge and insight he taught on the day, to tackle any graffiti removal request and not be concerned about shadowing or damage to Council assets".

People who completed the course, which are limited to six attendees, receive a Certificate of Attainment as well as OH&S related procedures and protocol documents. You can contact Greg or our other chemical product supplier members via the Corporate Member Directory page on MWA's website.





The push to a zero-emissions future won't be easy, but innovations from Komatsu are helping create a path to a sustainable future

Construction and resources companies are driving change in industry, Komatsu executive manager for Construction Dean Gaedtke says, increasingly looking to use equipment and technologies that deliver carbon-neutral performance.

“Contractors, project managers, client organisations, quarries and miners – and the broader community – are all seeking technology innovations and solutions that can help achieve what is essential for the future of the planet,” he says.

“Komatsu is at the forefront of many of these technology innovations that are driving the construction, operation and management of infrastructure and resources projects today – and into the future.”

Gaedtke says Komatsu’s suite of innovations, including its Smart Construction suite of integrated project and fleet management

solutions, intelligent Machine Control (iMC) technology, Komtrax remote monitoring offerings and its autonomous haulage solutions, are leading the way.

Smart Construction

The Smart Construction suite is a major step forward in improving productivity and safety in the construction, quarrying and mining industries through the application of unique technology and integrated products.

It covers critical steps in a project’s development, from initial site survey and design, through to machine control and management, machine interconnectivity and review of project progress during the construction phase, and finally development of detailed as-built information for future construction and infrastructure maintenance.

It’s designed to work across mixed-brand equipment fleets, offering a single “one-stop-shop” service and support solution across all phases of a project’s lifecycle.

With Smart Construction, the technology around fleet productivity management is exciting, with its ability to save customers a lot of time, money and cost per tonne, while helping monitor safety on every applicable machine in a fleet.

Site and fleet management teams can watch every piece of machinery in near real time and see where any hazards there may be.

They can monitor truck payloads for over and under-loads, as well issues such as site inefficiencies, over-revving, overspeeds, excess idle times and more.

intelligent Machine Control

Komatsu's iMC technology delivers major productivity, efficiency and cost saving advantages to its "intelligent" range of dozers and excavators.

On bulldozers, the fully integrated machine control systems automatically control blade elevation and tilt according to target design data, allowing the iMC dozers to be used at all

stages of a project, from initial bulk dozing to precision final finish work.

On excavators, iMC lets operators focus on moving material efficiently, without having to worry about digging too deep or damaging the target surface.

It can result in more than a 60 per cent improvement in work efficiency compared with conventional construction processes.

The latest iteration, iMC 2.0, significantly enhances iMC dozer operations on slopes, while new-generation iMC excavator hydraulics include an automated tilt function making them ideal for precise and complex batter and slope works.

Autonomous and semi-autonomous operations

Gaedtke says technologies like iMC are a step towards automating the construction sites of the future – and driving more efficient, and safer, site operations.

"We will also see automated technology that's



now proven in the mining industry making its way into smaller-scale operations such as construction and quarrying in the future," he says.

In the mining sector, Komatsu now has 520 semi-autonomous dump trucks globally driving without operators.

"Production is higher and maintenance costs are lower because autonomous trucks are driven exactly as they were designed to be operated. Even tyre costs are up to 40 per cent less due to reduced wear and tear," Gaedtke says.

"Soon we will see semi-autonomous and autonomous machines expand into our construction and quarry equipment products as the technology becomes more affordable and scalable."

Komtrax

Komatsu's remote machine monitoring system Komtrax can help customers identify potential issues with a machine well in advance of them breaking down.

Komtrax – which is provided free on every Komatsu machine sold in Australia, New Zealand and New Caledonia – today covers more than 20,000 machines after being introduced in 2008.

The latest versions of Komtrax identifies individual operators working in each machine, allowing site or project management and operators to work together even more closely to improve and develop skills and production levels.

Customers and their operators are using Komtrax to not only identify and fix potential issues before they become problems, but also to improve machine and site performance and productivity, and even operator skills.

"It has evolved into an efficient, easy system to use, that is invaluable for Komatsu in helping our customers, and helping our customers better manage their investments," Gaedtke says.

"We can see how a machine performs, how

the operators use it, and even benchmark it against other machines. That's valuable for customers, allowing them to better understand how to operate the machine more efficiently," he says.

Ultra-low emissions diesel technology

Komatsu now offers a full range of Tier 4 Final-compliant machines across the construction equipment range.

"Our new technology engines deliver fuel savings of between 5 and 15 per cent while complying with Tier 4 Final emissions standards," Gaedtke says.

Compared with previous generation Tier 3 engines, Komatsu's new technology engines reduce both particulate matter (PM) and nitrous oxide (NOx) levels by 90 per cent, he adds.

"And our Tier 4 Final engine technology is proving its benefits on major underground tunnelling projects, where the company's products have been outstandingly successful," he says.

The Tier 4 emissions engines are delivering "significantly" lower emissions in confined underground worksites, Gaedtke says, creating cleaner working conditions by using Komatsu's advanced engine controllers, new turbo design, exhaust aftertreatment and catalytic converter.

Hybrid excavator technology

As a step on the road to net zero, Komatsu has led the industry in developing highly fuel-efficient Hybrid excavators that combine diesel and electric power.

Fuel consumption on a Hybrid excavator is as much as 40 per cent lower than a same-sized conventional Komatsu excavator, saving owners fuel, carbon output and operating costs – while still maintaining reliability and production standards.

Komatsu Hybrid excavators are based around an "Ultra-Capacitor" linked to the swing circuit to generate power during operation. This has shown itself to be safe and reliable across

millions of hours of operations around the world.

Going fully electric

“Fully electric is not a commercially viable solution for a construction site or quarry now – especially in higher horsepower machines,” Gaedtke says.

Nonetheless, he says he’s confident that he will see it in future, saying the technology needed to be developed and made commercially viable on smaller machines first.

“An example of this is our all-electric prototype 3 tonne mini excavator, which is powered by a lithium-ion battery, and uses electrics instead of hydraulics for the arm, boom, bucket, swing and travel functions,” he says.

For the equipment operators wanting to move onto more sustainable machinery, the major challenge will be finding a way to phase out the use of the existing machines while remaining profitable.

To help them do this, Komatsu has been active

in a new concept that particularly applies to rigid and articulated haul trucks, known as “agnostic technology”.

“This is based around the principle of designing trucks that can be powered by diesel, hybrid, electricity (trolley or battery) or hydrogen,” Gaedtke explains.

“And throughout a truck’s operating life, which typically extends through multiple engine rebuilds/repowers, it may be powered by a mix of these alternatives.”

Gaedtke adds that all original equipment manufacturers were competing to devise solutions, with the competitive tension acting as a strong driver of major technology improvements.

“Certainly, our customers are driving us hard to devise zero carbon power systems in our products as fast as we can,” he says.

“This is something in which we all – manufacturers, end users, clients, governments and communities – need to play our part as we develop our roadmap to net zero emissions.”



We're here to support *you.*



KOMATSU
Creating value together

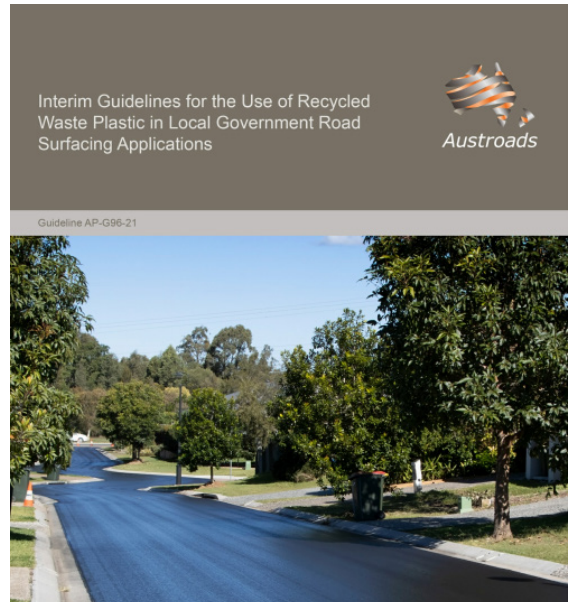


1300 566 287 | komatsu.com.au

INTERIM GUIDELINES ISSUED ON RECYCLED PLASTICS IN ROAD SURFACING

Since Australian governments agreed to ban the export of specific recycled waste plastics, there has been an increased interest in repurposing recycled waste plastic in Australia. One potential avenue for this is to use recycled waste plastic in road surfacing applications. Austroads have now released some interim guidelines to assist users of recycled waste plastic in road surfacing applications.

The interim guidelines cover the current understanding of the use of recycled waste plastic in dense graded asphalt (DGA) as a wearing course and sprayed sealing. The interim guidelines are intended for use by local governments for the surfacing of local roads that primarily provide access to abutting land.



**TRAILER MOUNTED, MULTI-VEHICLE
ELECTRIC BRAKE CONTROLLER** FIT ONCE TO YOUR TRAILER AND THEN TOW WITH ANY VEHICLE IN YOUR FLEET

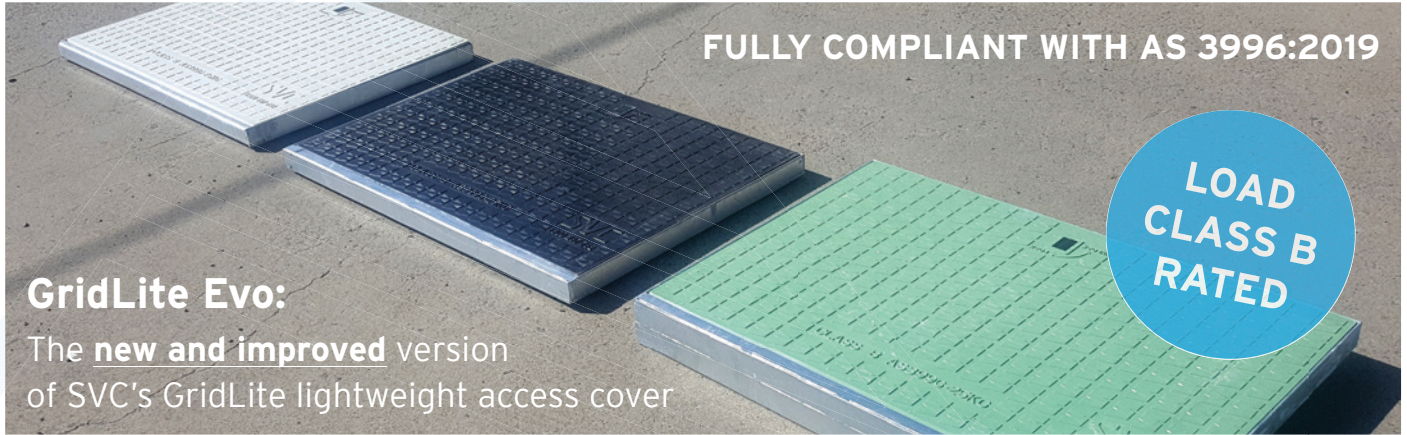
Elecbrakes is the brake controller of choice for Australian councils and contractors who want the flexibility to tow with any vehicle in the fleet. ADR compliant, Australian made, waterproof and shockproof with smooth proportional braking.

1300 516 248
www.elecbrakes.com



MAKE LIGHT WORK WITH GRIDLITE EVO ACCESS COVERS

- an evolutionary range of lightweight covers by SVC Products -



FULLY COMPLIANT WITH AS 3996:2019

GridLite Evo:

The new and improved version of SVC's GridLite lightweight access cover

Made from a sheet moulding compound (SMC) material, SVC's **GridLite Evo** is a durable lightweight access cover with an excellent strength-to-weight ratio.

Evo covers allow easy, single-handed access to stormwater pits and access chambers, with a bolt-down safety locking feature to ensure 24-hour security and provide exclusive access to authorised staff only.

Code	Description
28.EVO44JP	GRIDLITE EVO 450x450 JP SET
28.EVO66JP	GRIDLITE EVO 600x600 JP SET
28.EVO96JP	GRIDLITE EVO 900x600 JP SET
28.EVO99JP	GRIDLITE EVO 900x900 JP SET
28.EVO96SE	GRIDLITE EVO 900x600 SE SET
28.EVO99SE	GRIDLITE EVO 900x900 SE SET

COLOURS AVAILABLE:



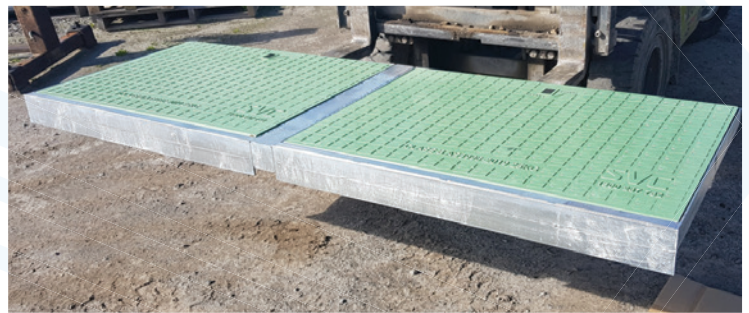
ADDITIONAL OPTIONS



PRE-ENCASED IN CONCRETE

GridLite Evo lightweight cover sets are available in concrete-encased options to suit 900x600 clear openings for junction pit applications.

Code	Description
28.EEVO129JP96	EVO ENCASED 1200x900 FRAME 900x600 JP SET CLASS B
28.EEVO139JP96	EVO ENCASED 1200x900 FRAME 900x600 JP SET CLASS B



DOUBLE SIDE ENTRY COVER SET

GridLite Evo lightweight covers sets are now available in an easy-install, one-frame-two-insert construction, made specifically to suit double side entry pit applications.

Code	Description
28.EVOD186SE	GRIDLITE EVO DOUBLE 1800x600 SE SET CLASS B

SVC is here to help. Contact us on 1300 287 782.

OMNIGRIP OPENS FIRST QUEENSLAND DEPOT



Tired of short-lived high-maintenance surfaces in your bike lanes? Need high friction surfaces that actually last? Want to use more Australian recycled-glass in your projects?

Our Platinum Sponsor, OmniGrip Direct, has opened its first Queensland depot in Brisbane. OmniGrip Direct has more than 20 years' experience in coloured bicycle lane and bus lane surfaces using Australian recycled-glass, and calcined-bauxite high friction surfaces. OmniGrip Direct's Melbourne office and depot is in Thomastown and its showroom in Queen Street in Melbourne's CBD.

Darren Scerri, Chief Executive, explained, 'With the introduction of mandatory prequalification of surfacing materials by Transport and Main Roads and the Local Roads Alliance, we've decided to open our first Queensland depot in Brisbane. We've been receiving requests from Queensland Councils and contractors for several years, and with TMR releasing tougher specifications and TIPES prequalification for coloured surface treatment and high friction surface treatment we've decided the time is right.'

'We want Queensland's road and path managers to have access to proven compliant safety surfaces that last, so they can keep their

community safe using Australian recycled-glass and our long lasting calcined bauxite surfacing system.'

Part of the SmarterLite Group, OmniGrip Direct also supplies a broad range of safety solutions for road and path managers, including wired, battery-only and solar hybrid LED pavement markers, VivacityLED Safety Tactiles (TGSi) and Safety Path photoluminescent linemarking and coatings.

"We're about to open our showroom at the depot in Archerfield. It's so important for Council engineering and operations staff to be able to touch, feel and see how they can quickly improve safety on their networks. We specialise in technology that is fast to apply to achieve safety and environmental improvements", said Darren.

SmarterLite and OmniGrip Direct have each received grants from the Australian Government's Road Safety Innovation Fund for photoluminescent line and signs, and OmniGrip Direct is working with the Australian Road Research Board to develop a new safety surface for Australian roads.

www.omnigripdirect.com.au



WILLIAM ADAMS SERVICING COUNCILS ACROSS VICTORIA AND TASMANIA FOR OVER 90 YEARS

LOCAL SERVICE

14 BRANCHES MEAN YOU
DEAL WITH LOCAL
PEOPLE IN REAL TIME

DEDICATED PRODUCT
SUPPORT TEAM

OVER **90** SERVICE
VEHICLES OUT
IN THE FIELD

OVER 1 MILLION
PARTS IN STOCK

 AUSTRALIAN
OWNED



GET IN TOUCH
TO FIND OUT MORE

1300 923 267 (WADAMS) | ENQUIRE@WILLIAMADAMS.COM.AU | WILLIAMADAMS.COM.AU

LET'S DO THE WORK.™



© 2021 Caterpillar. All Rights Reserved. CAT, CATERPILLAR, LET'S DO THE WORK, their respective logos, "Caterpillar Corporate Yellow", the "Power Edge" and Cat "Modern Hex" trade dress as well as corporate and product identity used herein, are trademarks of Caterpillar and may not be used without permission.





QUEENSLAND EVENT

MUNICIPAL WORKS NETWORKING DINNER AND PHIL LAKEY MEMORIAL GOLF DAY

We would like to thank everyone who braved the floods and heavy rain to attend our first post-COVID Municipal Works Networking Dinner and Phil Lakey Memorial Golf Day held at the Royal Pines Resort, Gold Coast, on 26 February 2022. We would like to acknowledge the generous support provided by the event's major sponsor Komatsu Australia (represented by John Tannahill) and our supporting sponsors which included Mark McKnight and his team from Link Resources, Peter Scheimer from TAA Connect, Brendan Archie from PLS Services and Damon Baker from AI Evolution.





Now aged 75, Melbourne-based Max Fitzgerald is a stalwart of the road construction industry.

Over nearly six decades, he has not only laid down thousands of kilometres of bitumen but also a lifetime of memories.

He started in the business as a teenager, working with his father who had returned from the Burma railway.

He has been at the forefront of many industry innovations, most notably the use of crumb rubber waste to help seal cracks in roads.

“We took what was rubbish and added in an odour suppressant into all the bitumen mixes, so it wasn’t harmful or unpleasant for the road workers,” he said.

“The suppressant locks the vapour and the smell into the bitumen, and we were the first in the world to do this.

“We were able to use high volumes of waste from old tyres and other plastics – up to 25% of the final mix – so this was also great for the environment. These roads also were better for motorists as they give better braking and skid resistance, prevent moisture penetrating sub grade which gives longer life to the pavement, reduces tyre noise, helps to reduce volume of bitumen that has to be imported into Australia and helps dispose of wastes – good sustainability for all.

Max has travelled the world sharing his road construction knowledge and forming relationships with industry and government representatives in countries such as Vietnam, Israel, China, and East Timor. His stories could fill many books.



Closer to home, some of the more memorable projects he has been involved in include the Heatherton Road section in Melbourne and even the civil works at Sandown Greyhound

Racetrack which involved carting in substantial amounts of topsoil from the (then) newly constructed suburb of Dingley. Max is also good friends with the Keith Brothers who worked on WA's Ord River Project.

He has also been an active participant in Municipal Works Australia Organisation (MWA) and the various industry bodies that preceded it. In fact, he was registered as No.66 foundation member of the former Australian Earth Movers & Road Contractors Federation.

"I would encourage anyone in the industry to be part of MWA as the number one benefit is networking," he said. "It is especially important to get to know the council engineers who work at the front line – you've got to get involved and give them maximum support."

His company, Road Maintenance, has also been a constant exhibitor at the MWA annual conference.

"This year we were really impressed with the standard of the conference. We had our truck right at the front of the exhibition space and we got a lot of feedback about our modern crack sealing equipment which can repair 5000m of cracks a day."

Max is always keen to pass on his industry knowledge to others, especially his children

Eric, Paul and Rian who all work in the business and one day will become its owners.

"I give them the same advice as I give others: work hard, work together and operate honestly."

It's a recipe for business success that ensures Max's legacy will continue for many years to come.



TAMS TRAVEL AWARD WINNERS ATTEND CONFERENCE

Special attendees at this year's annual conference were the two winners of the Tasmanian Association of Municipal Supervisors travel awards.

The TAMS awards, established in 2019 and supported by the national apprenticeship and training provider IntoWork Australia, sponsors the successful applicants to attend MWA's annual conference.

This year's winners were Jade Jones, Manager Works Implementation at Huon Valley Council, and Darren Johnson, Works Manager at Kingborough Council, who both impressed members of MWA's Board with their applications.

Jade, who has worked at Huon Valley Council for the last 14 years, said the conference was a professionally-run event.

"The guest speakers were excellent and there was so much to learn and take away, from lessons on how to a build team, be a better leader and be a better version of yourself," he said.

"The dinners were both fantastic, to be able to meet people in the same industry from right across Australia and know that we are all working through the same issues at every Council/Shire," Jade said. "I can't thank the MWA enough for the opportunity."

Darren, who has worked for two Tasmanian councils over the last eight years, said it was great to meet people from other councils who have similar challenges.

"The opportunity to network and discuss opportunities to collaborate or problem solve was fantastic," he said. "Listening to keynote speakers and conference partners elaborate

on methods of construction or project management was a great learning experience. The ability for the showground to hold live field based demonstrations is something that I have not seen at other conferences."





The damage bill to fix roads across South East Queensland and NSW impacted by recent floods is expected to exceed \$1bn.

Gaping potholes, landslides and damaged bridges are just some of the aftermath for councils in these areas which experienced record-breaking floods in mid-March, with some communities in northern NSW hit again in late March and April.

State and Federal government disaster relief packages have been made available to councils across both Queensland and NSW

to address urgent operational challenges but it is expected more funding will be needed to repair infrastructure.

“Councils are the closest form of government to their communities and play a vital role in everyday life of regional and rural areas,” Local Government NSW (LGNSW) President Cr Darriea Turley said.

“This extra funding is desperately needed by regional councils to shorten the length of the recovery process.”



www.tcaaustralia.com.au
 Toll Free: 1800 055 292
 info@tcaaustralia.com.au
 PO Box 7466, Beaumaris Vic. 3193

Bike Lanes – Parklets – Shared Zones - Separation – City – Suburbs – Regions.



Innovative Rubber Road Safety Products: Speed Cushions, Kerb Profiles, Roundabouts, Speed Humps, Wheel Stops, Separation Kerb, Bollards.



DANGEROUS ROADS

Does Your Municipality have one of Australia's Most Dangerous Roads?

As the pandemic has compelled many of us to choose cars over public transport, road safety is more important than ever. To help unpack the risks car insurer AAMI took a deep dive into over 360,000 motor insurance claims to expose the most dangerous roads in Australia. AAMI's 2021 Crash Index contains some interesting reading, particularly for some of our local government councils located within the urban growth corridors in their various states. You can have a look at the five most dangerous roads located in Australia's major cities via the link below.

MELBOURNE:

5TH CRAIGIEBURN ROAD, CRAIGIEBURN

Melbourne's north is said to be one of the fastest growing regions in Australia, and all that growth brings congestion. It's no surprise that Craigieburn Road has been steadily rising in the ranks, entering #5 this year after previously sitting at #9. Let's hope the planned upgrades ease some of the strain on this major arterial road.

4TH BELL STREET, PRESTON

Preston has been a fast-developing suburb for years, with its Victorian shop fronts, and many cafes and multicultural restaurants. Perhaps that's why this stretch of Bell Street has jumped three spots up to #4.

3RD SPRINGVALE ROAD, SPRINGVALE

Springvale Road maintains its 3rd spot, which would come as no shock to commuters who deal with its congestion and speeding drivers on the daily.

2ND SPRINGVALE ROAD, GLEN WAVERLEY

Springvale Road does it again. This infamous repeat offender maintains its #2 spot in 2021. With its congestion, stop-start traffic, and distracted shoppers coming to and from the newly expanded Glen – it doesn't look like its reputation will improve.

1ST PLENTY ROAD, BUNDOORA

Plenty Road in Bundoora takes Melbourne's crash crown, after holding the title for four years in a row – quite the feat!

This stretch has many factors working against it: a heavy stream of commuters, multiple entry points, several lanes of traffic in both directions and a tram track running down the middle. Stay alert in the mornings – our claims data shows that this is when 31% of crashes occur. As for worst days, watch out for Tuesdays and Thursdays.

BRISBANE:

TIED 5TH GYMPIE ROAD, ASPLEY

The Aspley stretch of Gympie Road moves up a spot from last year – a jump that may not surprise those who frequent this busy, arterial road.

TIED 5TH LOGAN ROAD, MOUNT GRAVATT

Logan Road is a familiar face on our Crash Index, but there's reason for optimism –it's

dropped three spots from its 2020 runner-up position. Though, still practise caution here, especially near the Creek Road intersection.

4TH IPSWICH ROAD, ANNERLEY

What comes to mind when you think of Annerley? Op shops? Taco Bell? You might want to add road incidents to that list – Ipswich Road holds 4th place on our Crash Index.

3RD MORAYFIELD ROAD, MORAYFIELD

Morayfield Road also maintains its 3rd spot this year. Stay cautious when you're transiting through the area or heading to Bite Markets for the day.

2ND GYMPIE ROAD, CHERMSIDE

Gympie Road's peak hour traffic is infamous in Brissie – that's why this stretch frequently tops our lists, even taking the crash hotspot crown in 2020. This year, it falls to 2nd place.

1ST BRUCE HIGHWAY, CABOOLTURE

It's been a dramatic year for the Bruce Highway – in the span of 12 months, it sped up the ranks from #10 to Brisbane's #1 crash hotspot! Gympie Road was reigning champion for three consecutive years, so stealing the crown is quite a feat.

Afternoons on Bruce Highway are especially risky. According to our claims data, 33% of our crashes occur at this time. As for the worst days, Sunday takes the cake.

HOBART:

5TH BROOKER HIGHWAY, HOBART

This major artery is a frequent offender on our Crash Index. As one of the busiest highways in Tasmania, carrying thousands of motorists per day – it's no surprise why. But there's good news this year! The Brooker Highway drops two spots down to #5.

4TH MAIN ROAD, MOONAH

Moonah is rising the ranks, from #7 last year to #4 in 2021. It looks like growth comes with a cost: congestion. Stay alert here, especially when commuting to and from the CBD.

3RD SANDY BAY ROAD, SANDY BAY

Heading to the beach or casino for the day? You'd better stay cautious – Sandy Bay Road has been a familiar presence in Tassie's top three hotspots over the years. This year, it takes #3, moving up a spot from 2020.

2ND MACQUARIE STREET, HOBART

Hobart's inner hub is notorious for traffic issues – in fact, Hobart has been named the 4th most congested capital in Australia! This year, Macquarie Street, Hobart holds 2nd place on our Crash Index. Hobart's car independence, population growth and building boom are a sure recipe for congestion.

1ST ARGYLE STREET, HOBART

Argyle Street holds the dishonourable title of Tassie's #1 crash hotspot for the 2nd year in a row! This road is popular among commuters trying to avoid the congested Brooker Highway. The hospital, hotel and numerous shops and restaurants along this route certainly don't help.

Stay alert in the afternoons – 49% of crashes occur at this time, according to our claims data. As for worst days, be wary of Mondays and Thursdays.

PERTH:

TIED 5TH WELSHPOOL ROAD, WELSHPOOL

Stay alert Welshpool locals, city commuters and those driving through on the way to the zoo. This major arterial road jumps two spots up to #5.

TIED 5TH WANNEROO ROAD, WANNEROO

Wanneroo is known for its pristine nature reserves and outdoor activities, but it's also becoming known for road incidents. This stretch of Wanneroo Road moves up a spot to 5th place this year.

TIED 4TH TONKIN HIGHWAY, BAYSWATER

The Bayswater stretch of Tonkin Highway is a major bottleneck carrying more than 120,000 vehicles daily – so, it's no surprise that this road comes in at #4. But stay hopeful Perthies! Major upgrades to the Tonkin Highway are expected to shorten commutes.

TIED 4TH MITCHELL FREEWAY, PERTH

Perth's traffic volume is expected to outgrow the Mitchell Freeway's design capacity by the next decade! It certainly looks like things are heading in that direction, with this road holding 4th place – especially in pandemic times when many Perthies are choosing cars over public transport.

3RD GREAT EASTERN ROAD, MIDLAND

Perth's #1 crash hotspot moves down to #3 this year, but peak hour is still a nightmare. The Midland stretch of Great Eastern Road has all the markers for congestion: a busy shopping precinct, including a major shopping centre, and the commercial centre of the Swan Valley wine region.

TIED 2ND NICHOLSON ROAD, CANNING VALE

Nicholson Road in Canning Vale is another familiar face on our Crash Index. Daily commuters in the area know the length and stress of its peak hour all too well. This year, it maintains 2nd place.

TIED 2ND ALBANY HIGHWAY, KELMSCOTT

Kelmscott is known for being green and family-friendly, with its various parks and playgrounds. But it's getting a rep for road incidents! This year, the Kelmscott stretch of Albany Highway sits at #2 – quite a feat, considering it wasn't featured on our list in 2020!

1ST ALBANY HIGHWAY, CANNINGTON

Albany Highway in Cannington has held Perth's crash crown for many years, aside from 2020, when it sat at #3. This area has no shortage of motorists, including a constant stream of commuters to Westfield and surrounding shopping precincts. But things may ease with the planned upgrades to the Leach Highway and Welshpool Road intersection – fingers crossed!

Stay alert in the arvo – this is when 34% of crashes occur, according to our claims data. As for worst days, Saturday takes the cake.

SYDNEY:

TIED 5TH HUME HIGHWAY, YAGOONA

Stay alert Yagoona locals, and those just passing through for a quick banh mi – this stretch of the Hume Highway is Sydney's 5th most dangerous road.

TIED 5TH RICHMOND ROAD, MARSDEN PARK

The daily congestion on Richmond Road is a struggle that unites Marsden Park locals. It's no surprise that this road comes in at #5, jumping up five spots from 2020.

TIED 4TH VICTORIA ROAD, WEST RYDE

Victoria Road hasn't budged from last year's spot at #4. With its frequent stream of motorists – including students on the way to the nearby TAFE – it's going to be hard for this road to improve.

TIED 4TH M5 MOTORWAY, MOOREBANK

Be careful Moorebank residents, and those driving in to drop the kids off at footy practice. This stretch of the M5 Motorway is a newcomer at #4.

3RD PACIFIC HIGHWAY, CHATSWOOD

With its retail stores, high-rises and live music venues, Chatswood is one of the most vibrant areas of Sydney. But that all comes with a price: traffic congestion. Moving up two spots from last year, this stretch comes in 3rd place.

2ND M4 MOTORWAY, PARRAMATTA

The M4 Motorway is notorious for its congestion – it's not surprising that it's our #2 crash hotspot in Sydney. But the new smart motorway system brings hope! Perhaps this road will soon slide down our list.

1ST HUME HIGHWAY, LIVERPOOL

The Hume Highway has done it again. This infamous stretch of road has held its #1 spot for the past eight years, excluding 2017.

Stay extra alert in the afternoons – that's when 38% of crashes occur. You're also most likely to crash on a Friday, so stay cautious while ringing in the weekend.



FIRST ALL ELECTRIC SWEEPER

As the world moves towards more sustainable vehicle options, Hako has released its first all-electric compact sweeper.

“The global market is looking to electric vehicles to greatly reduce the exhaust emissions from traditional combustion engines to help meet reduced carbon emission targets in the fight against global warming,” a Hako spokesperson said.

With a history in environmental and sustainability innovation, Hako has developed the 1650 ZE to deliver on the reduced emissions promise without sacrificing cleaning performance, productivity and safety.

Based on the Citymaster 1650, adding the initials “ZE” to represent zero emissions, the

new Citymaster 1650 ZE is equipped with all-electric components and works up to 9 hours without recharging.

While noise and particulate emissions are reduced to a minimum, it provides maximum efficiency, user comfort and safety.

In addition to sweeping up coarse dirt and leaves, the Citymaster 1650 ZE is ideal for carrying out wet cleaning tasks – e.g., to remove particularly stubborn dirt or oil spills – as well as light winter services.

The electric drives are not only extremely powerful but also reduce your energy costs.

It also features greater driving and operating comfort for the user with an ergonomic design and a back-friendly quick-change system.



MEMBER PROFILE

MOHIT JAIN

PROJECT ENGINEER - INFRASTRUCTURE
SOUTHERN GRAMPIANS SHIRE

Mohit was a winner of a travel award which sponsored his attendance at the recent MWA Annual Conference.

As the only certified engineer at his council, Mohit said he was committed to upskilling himself through training and attending seminars so appreciated the support to attend the MWA conference.

“Through this conference, I look forward to building engineering connections across Victoria but particularly help grow the South West region. I am looking after some of the sustainable projects for the shire and I may be able to contribute to the society in that area,” he said.



VICTORIAN EVENT

LOCAL GOVERNMENT GOLF DAY

Thanks to everyone who participated in the MWA Local Government Golf Day which was held at Eagle Ridge Golf Course on Friday 29th April. Congratulations for the team from Mornington Peninsular Shire who won this year's event. MWA would like to thank the events major sponsor SuperSealing, and supporting sponsors Ventia, R&S Grating, Downer and KPI Utilities.







Municipal Works Australia

LOCAL GOVERNMENT MEMBERSHIP

MWA is a not-for-profit member-based association established to support individuals and organisations working in the field of municipal works. Founded in 1936 as the Victorian Municipal Superintendents of Works and Overseers Association, MWA aims to foster excellence in the provision of municipal works and services through providing professional development, peer support and networking events. The works fields traditionally associated with MWA include road and civil infrastructure maintenance and construction, parks and open space, waste management, fleet management, engineering services, and the people and professions that support operational staff.

MEMBERSHIP OF MWA IS FREE FOR ANYONE THAT WORKS IN LOCAL GOVERNMENT IN AUSTRALIA.



THERE ARE TWO LEVELS OF MEMBERSHIP

GENERAL MEMBERSHIP (FREE)

- Eligibility to participate as voting members on MWA's governance positions
- Access to the MWA's newsletters and other communications
- Networking opportunity through participation in branch meeting, networking activities, events, and programs
- Subscription to MWA's Access magazine
- Access to participate in MWA's Webinar and other training and development programs

OPERATIONS FORUM MEMBERSHIP (\$225 PER YEAR)

MWA's Operations Forum membership is for local government employees that want to develop their professional skills and professional network. MWA Operations Forum members will receive the benefits provided to our general members as well as:

- Invitation to the Operations Forum networking events, where you can hear presentations from industry experts on issues relevant to municipal works professionals
- Invitation to MWA's National Municipal Works and Engineering Conference networking event
- Opportunity to earn and track your Professional Development Credits (PDCs)
- A range of other value-added benefits including access to assistance with operational and other advice associated with your role as a municipal works professional

AS A MEMBER OF MWA YOU CAN:

- Share common goals, challenges, and solutions with other municipal works professionals throughout Australia
- Participate in a range of free networking events, meetings, and social activities
- Gain exposure to thousands of municipal works professionals, opening opportunities for your future
- Tap into the experience of other members and access a range of practical resources
- Access education and training programs covering a range of topics relevant to your career in local government, including access to the MWA's Professional Development Credit Certificates (PDCs) program

YOU ALSO GET:

- Free subscription to MWA's electronic community network, allowing you to contact and connect with your fellow municipal works professionals across the country
- Free access to MWA's Networker monthly e-newsletter
- Free subscription to the MWA's ACCESS Magazine
- Free access to online resources and educational programs
- Free registrations for the MWA's live Webinars programs
- Opportunity to earn and track your Professional Development Credit Certificates (PDCs)



SIGN UP ONLINE:

<https://municipalworks.com.au/membership/general-memberships/>
For more information visit www.municipalworks.com.au
or email admin@municipalworks.com.au